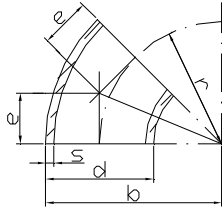
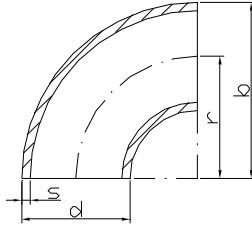


## Rohrbogen EN 10253-1 3D ( DIN 2605 ) MASSTOLERANZEN

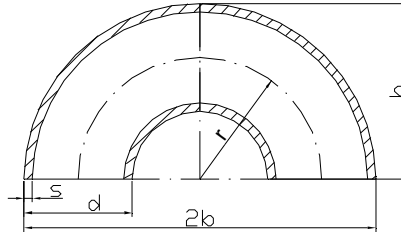
Rohrbogen 45o



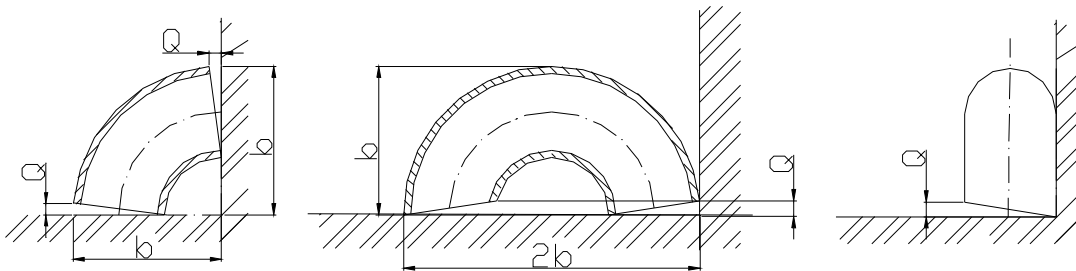
Rohrbogen 90o



Rohrbogen 180o



Aussen durchmesser	Masstoleranzen		
	b Rohrboge 45°	b Rohrboge 90°	2b Rohrboge 180°
21,3-76,1	±6,0	±2,5	±8,0
82,5-114,3	±7,0	±3,0	±9,0
133,0-219,1	±8,5	±3,5	±10,0
>220	±9,5	±4,0	±14,0



Aussen durchmesser	Masstoleranzen				
	Aussen durchmesser d	Wandstärke s	Radius r	Ovalität	Abmass Q
21,3-76,1	+1,6mm -0,8mm	-12,5% +15%	±2,5mm	4%	±1% x d ñ 1mm
82,5-114,3	±1,6mm		±3mm		
133,0-219,1	±1%		±4mm		
>220			±5mm		